

BUTTERFLY VALVE

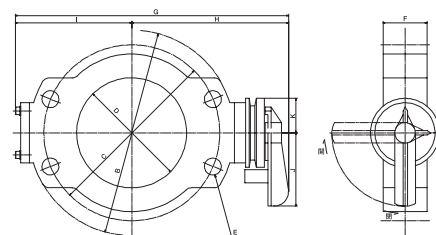
BV- $\frac{3}{4}$ BV-1 BV-1 $\frac{1}{4}$ BV-1 $\frac{1}{2}$ BV-2 BV-3 BV-4 BVF-4 BVF-6



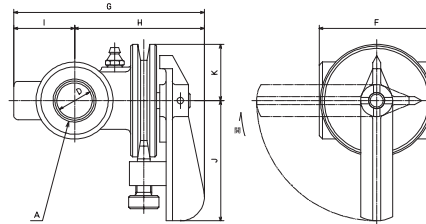
FEATURES

These series of Butterfly Valves are equipped with the manually operated indicator which functions to control a gas or air flow rate.

OUTER CONFIGURATIONS



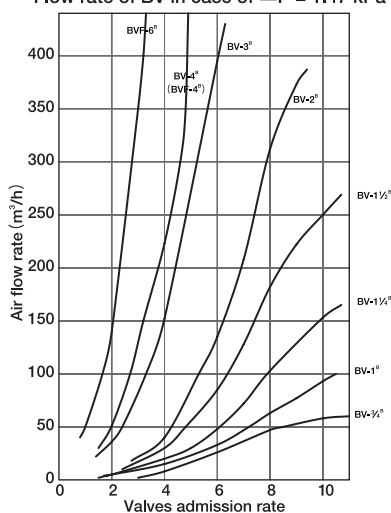
BVF-4~BVF-6



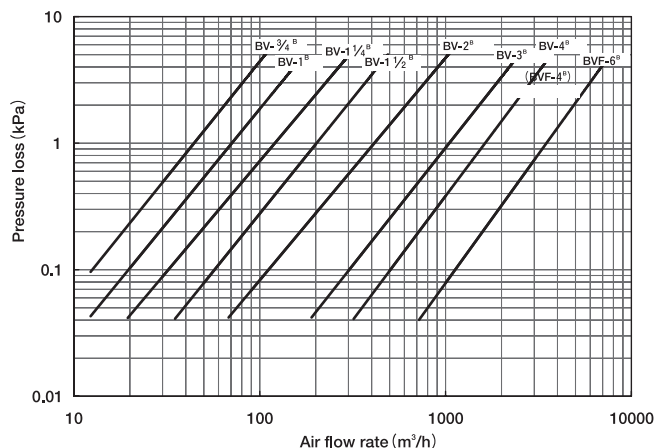
BV- $\frac{3}{4}$ ~BV-4

DATA

Flow rate of BV in case of $\Delta P = 1.47$ kPa



Pressure loss / Flow rate relation in case of Valves admission rate = 10



SPECIFICATIONS

Model No.	BV- $\frac{3}{4}$	BV-1	BV-1 $\frac{1}{4}$	BV-1 $\frac{1}{2}$	BV-2	BV-3	BV-4	BVF-4	BVF-6
Connector flange	PT $\frac{3}{4}$	PT1	PT1 $\frac{1}{4}$	PT1 $\frac{1}{2}$	PT2	PT3	PT4	4B10K	6B10K
A									
B								ϕ 210	ϕ 280
C								ϕ 175	ϕ 240
D	ϕ 22	ϕ 26	ϕ 32	ϕ 40	ϕ 50	ϕ 80	ϕ 100	ϕ 100	ϕ 150
E								ϕ 19	ϕ 23
F	72	72	80	80	98	98	150	60	60
G	119	127	133	142	155	198	238	303	373
H	81	87	90	95	103	122	150	180	215
I	38	40	43	47	52	76	88	123	158
J	75	75	75	75	75	75	100	100	100
K	35	35	35	35	35	35	47	47	47

□ NARITA SEISAKUSHO CO.,LTD.

91, Tomishiro, Simotsuya, Kumiyama-cho, Kuse-gun, Kyoto
613-0035.JAPAN
Phone: +81-774-43-5811 Facsimile: +81-774-44-1103
Web Site: <http://www.narita-mfg.co.jp/>
Email: narita-inf@narita-mfg.co.jp

□ NARITA TECHNO CO.,LTD.

20, Kamijinya-cho, Seto, Aichi 489-0063.JAPAN
Phone: +81-561-21-1111 Facsimile: +81-561-21-1112
Web Site: <http://www.naritatechno.co.jp/>
Email: info@naritaseitosh.co.jp

□ NARITA SEITOSHO CO.,LTD.

70, Dosen-cho, Seto, Aichi 489-8680.JAPAN
Phone: +81-561-82-6138 Facsimile: +81-561-84-9677
Web Site: <http://www.naritaseitosh.co.jp/>
Email: webmaster@naritaseitosh.co.jp